

# LDC 样品测试说明及结果

## 1. 测试坐标原点（虚拟焦点 $x=0.016\text{mm}$ , $y=-0.002\text{mm}$ , $z=-0.192\text{mm}$ ）

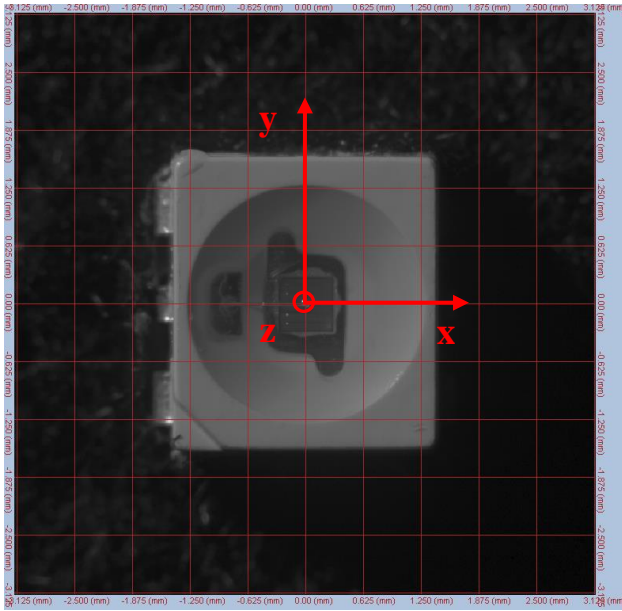


图 1  $I=0^\circ, A=0^\circ$

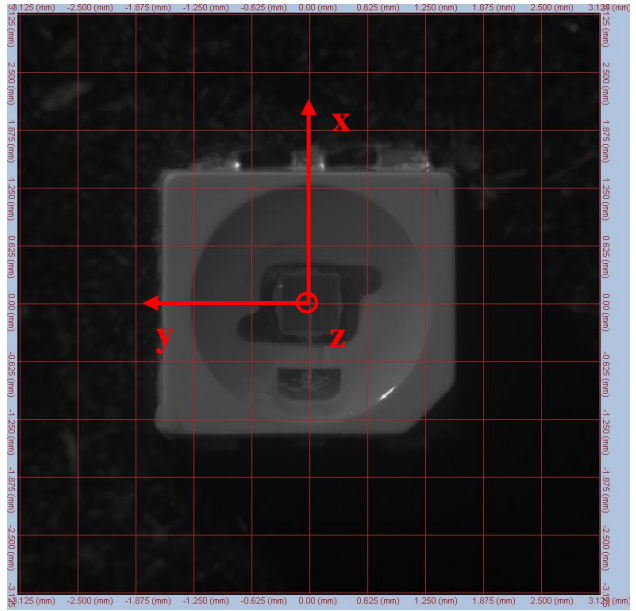


图 2  $I=0^\circ, A=90^\circ$

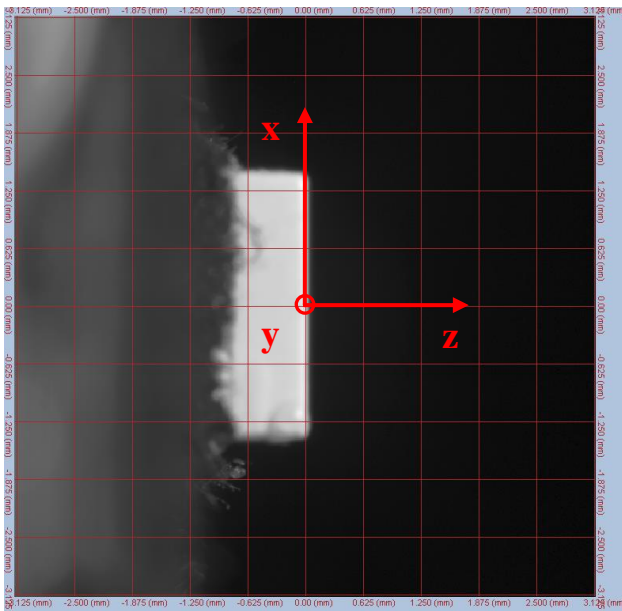


图 3  $I=90^\circ, A=90^\circ$

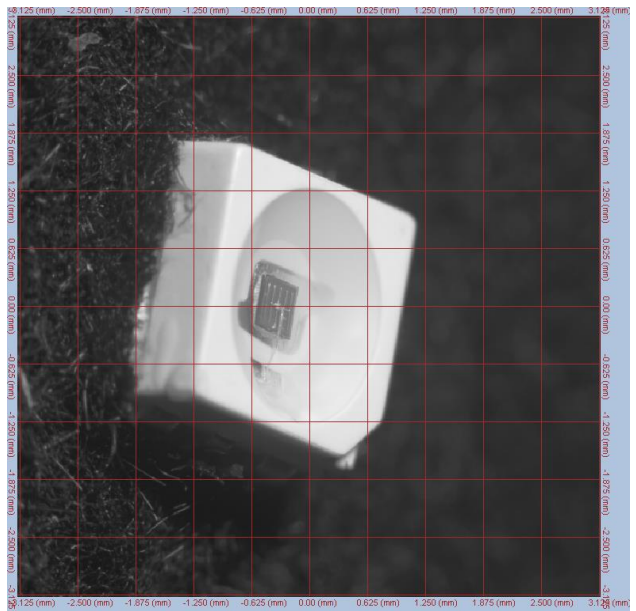


图 4  $I=50^\circ, A=75^\circ$